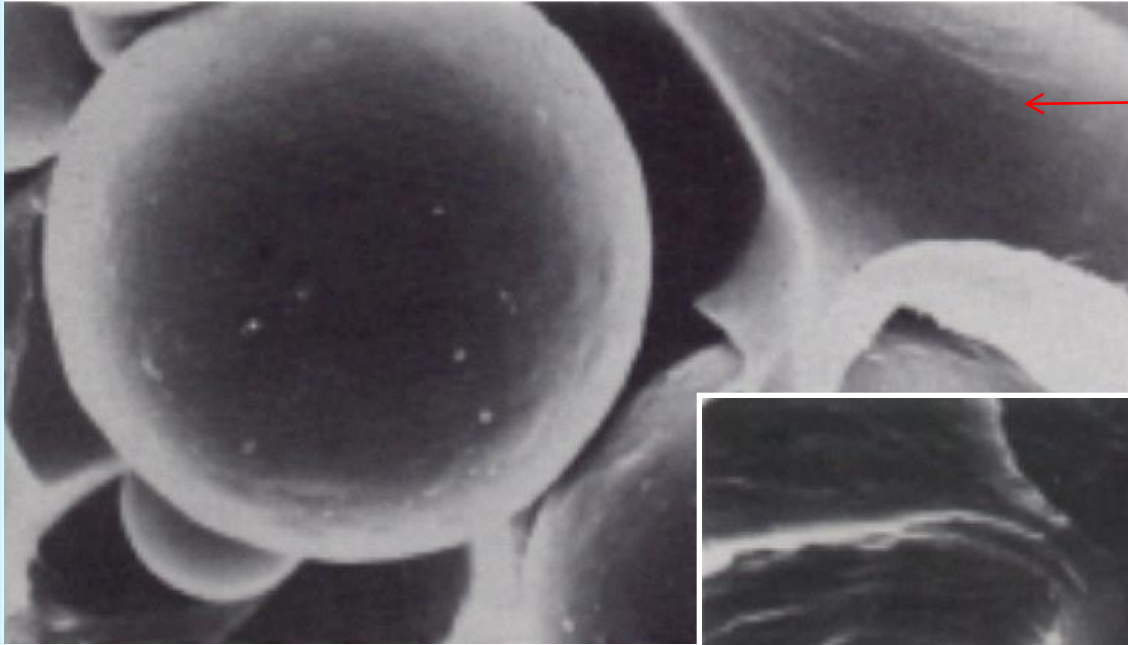


# COMPOSIETEN

Hechting van de vulstoffen in de kunsthars  
Dezelfde vulstoffen – verschillende behandeling

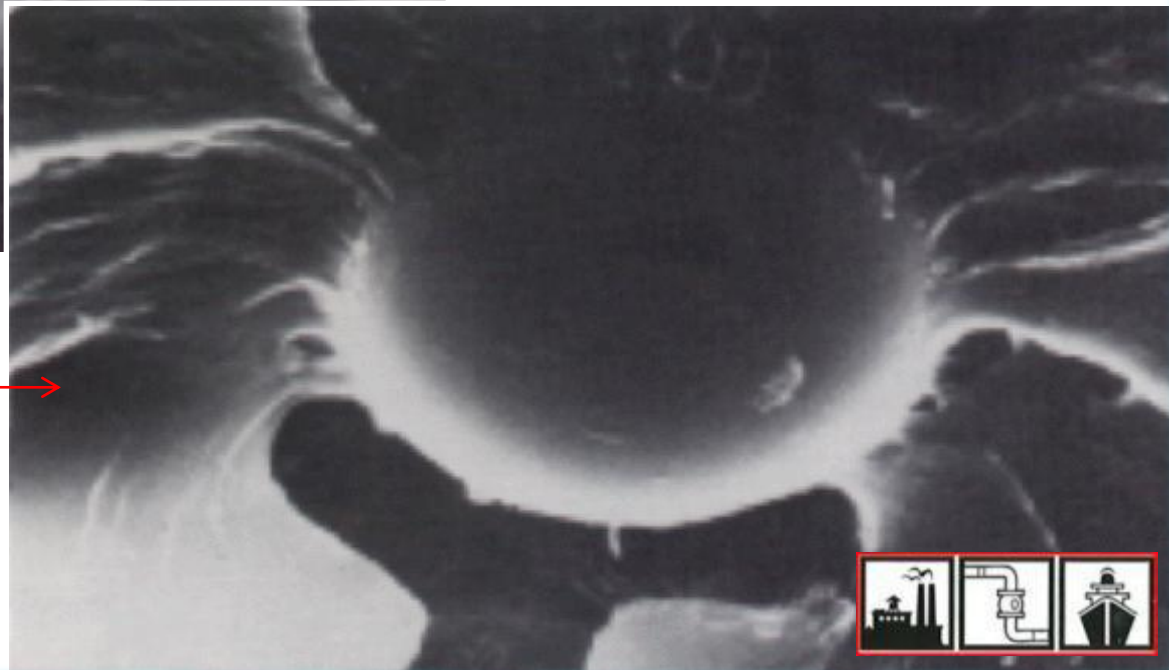


Met

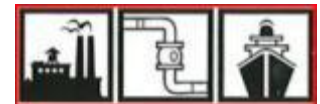
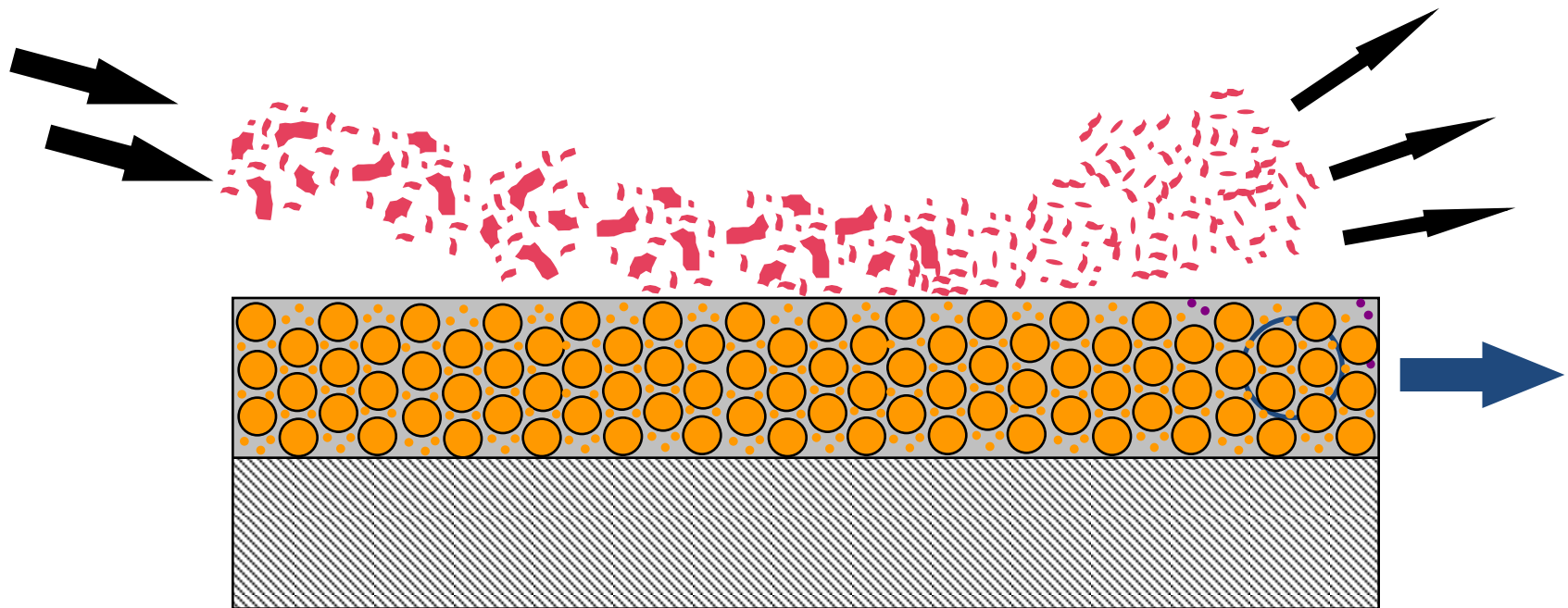
Hecht verbeteraar

Zender

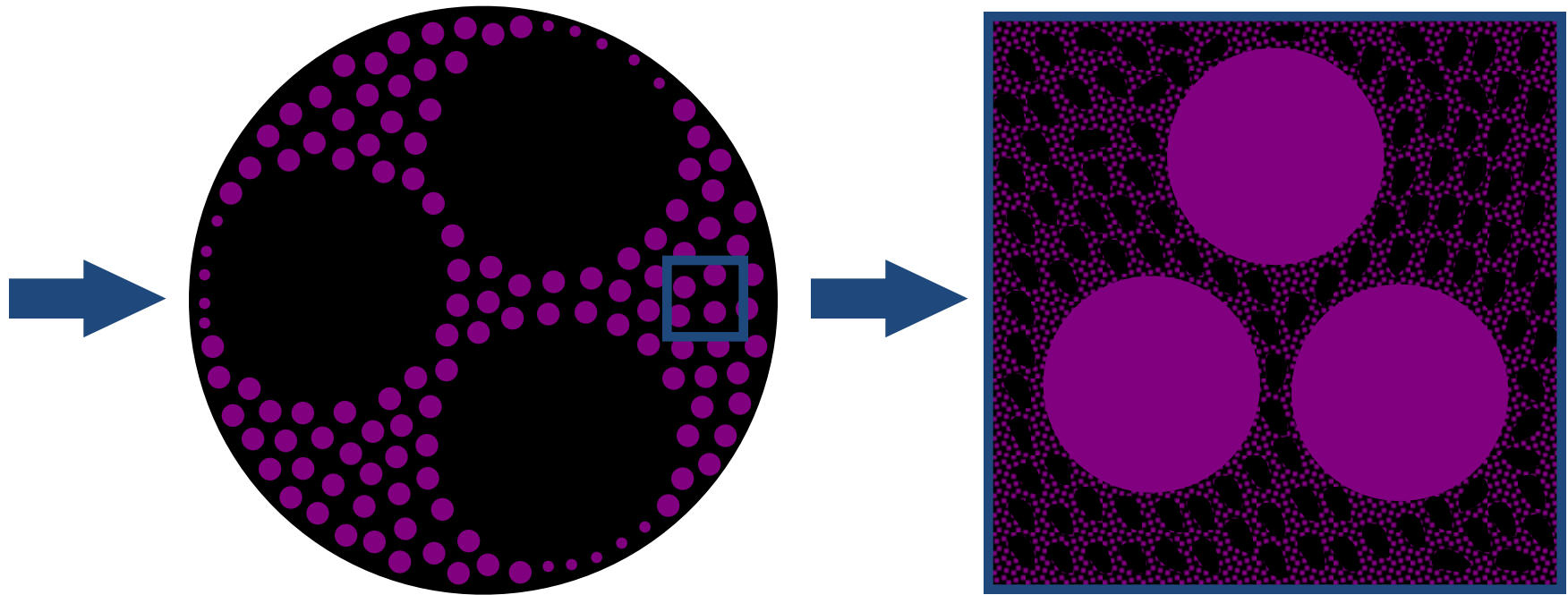
Hecht verbeteraar



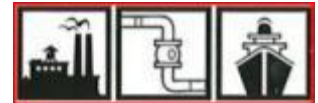
# Vullings vorm van Ceramische vulstoffen tegen erosie



# Vullings vorm van Ceramische vulstoffen



Rust never sleeps



# COMPOSITE

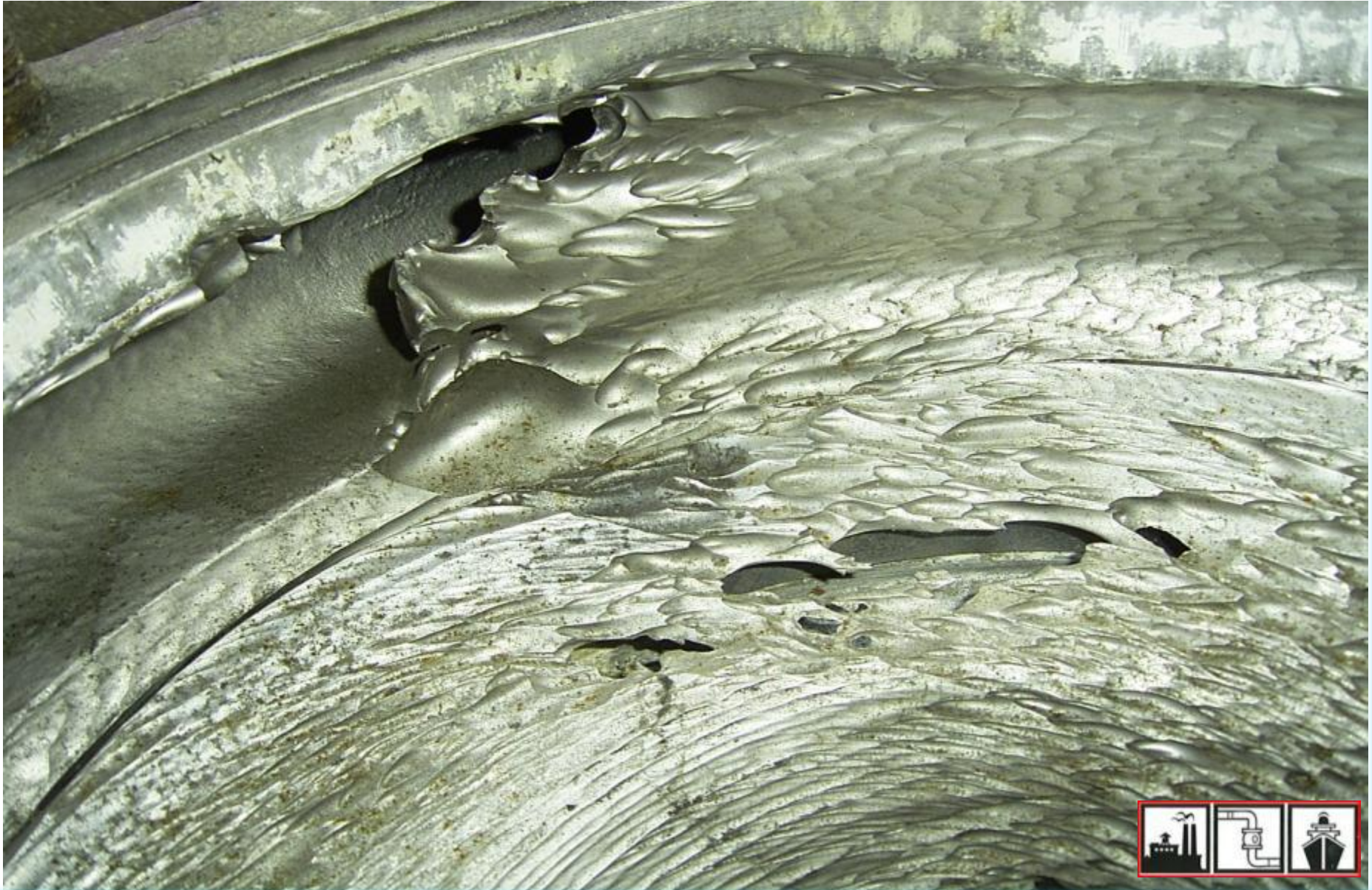
desigend for

# EXTREM WEAR

Rust never sleeps



# COMPOSITES



# COMPOSITIETEN



Voorbeelden van  
composiet toepassing  
Jet pomp



# COMPOSIETEN



Jet pomp



# COMPOSIETEN



Rust never sleeps





# COMPOSITIETEN



Rust never sleeps



# COMPOSIETEN

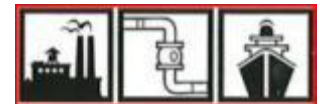
Erosie schade opgebouwd  
met ceramische gevulde  
composiet



# COMPOSIETEN



Jet pomp



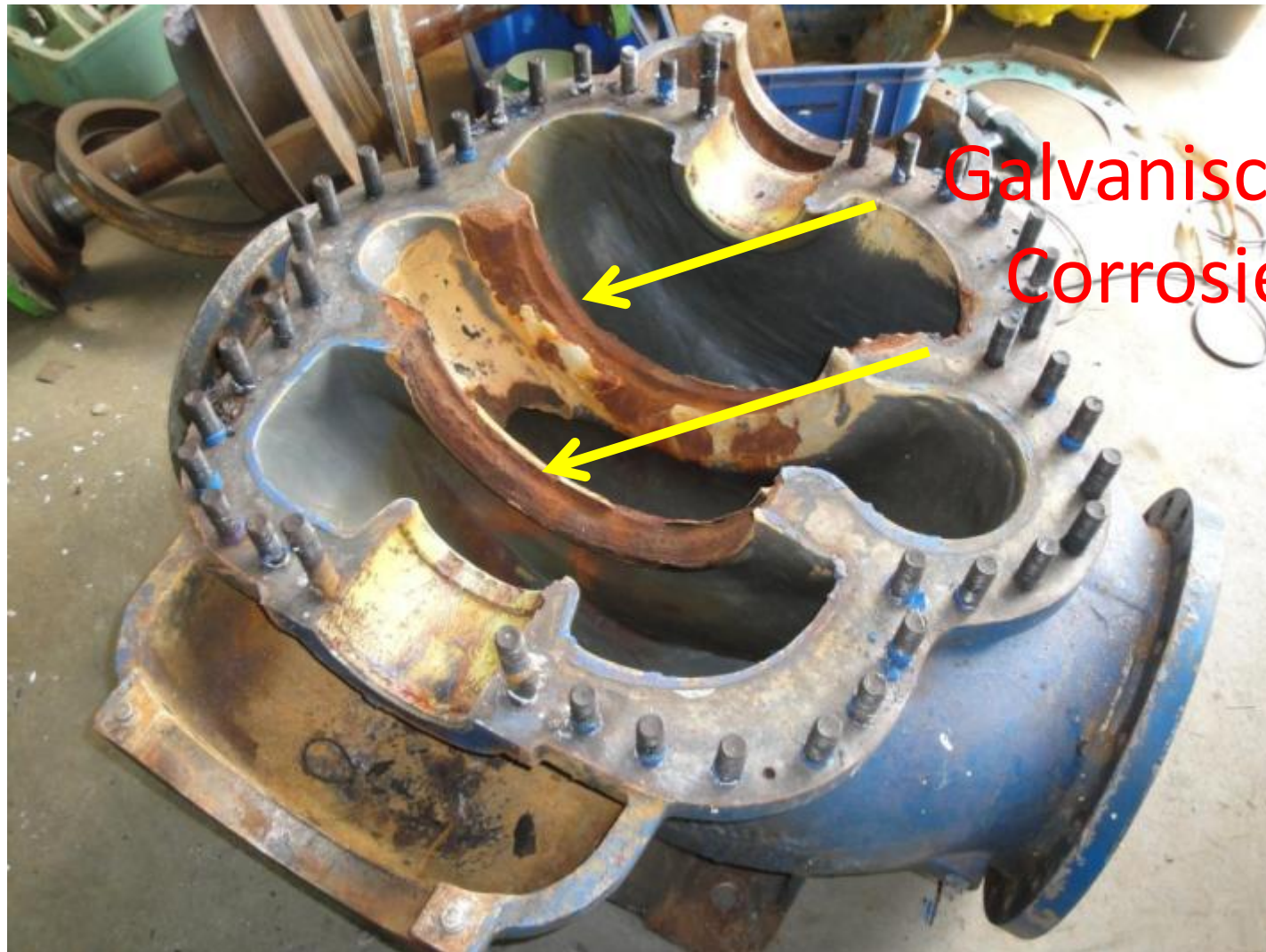
# COMPOSITIETEN

Jet pomphuis bekleed na toepassing.  
Resultaat: grootste schade aan de niet  
behandelde delen als gevolg van “*galvansche  
corrosie*”

Jet pomp



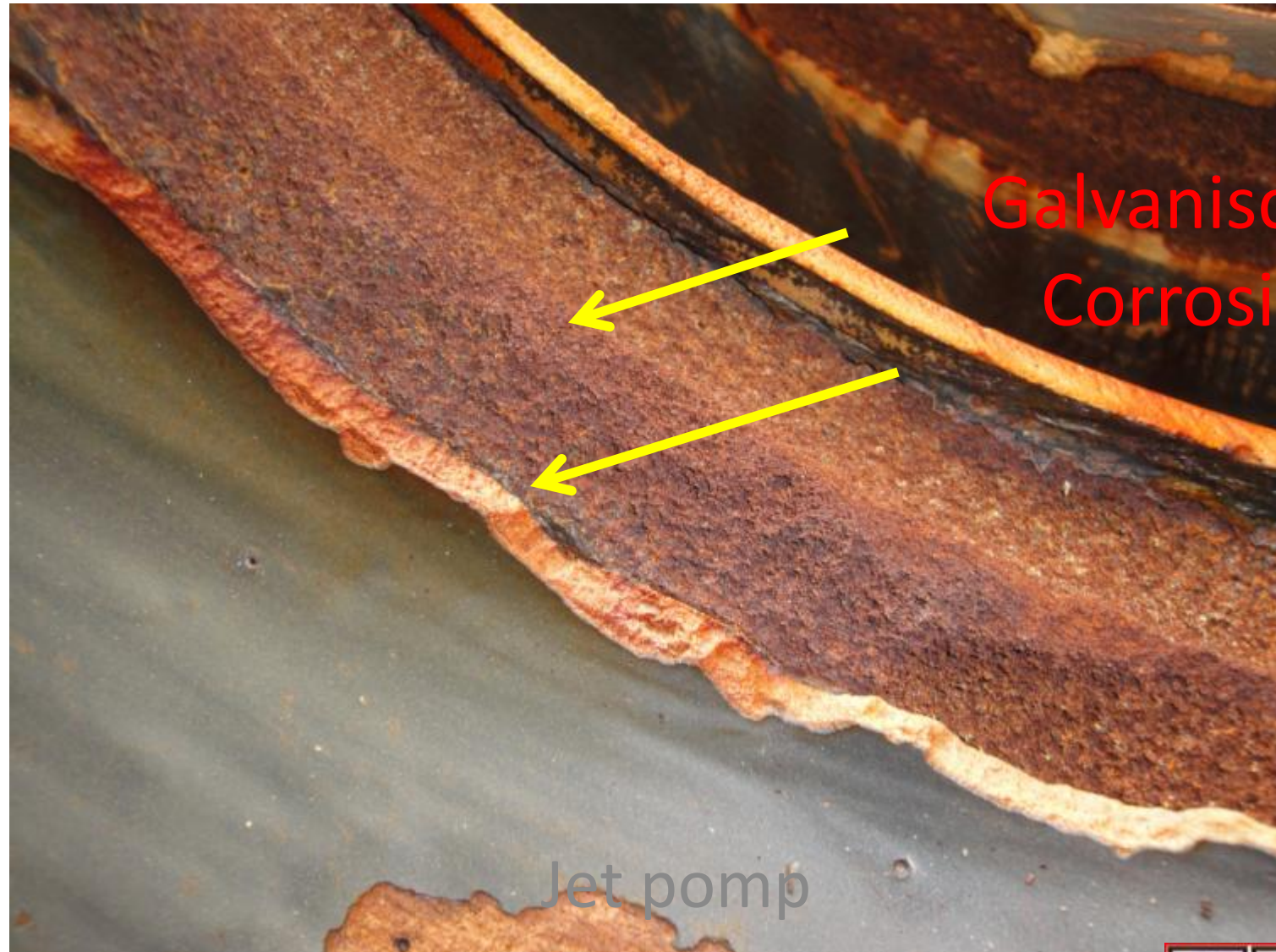
# COMPOSITIETEN



Jet pomp



# COMPOSITIETEN



Galvanische  
Corrosie

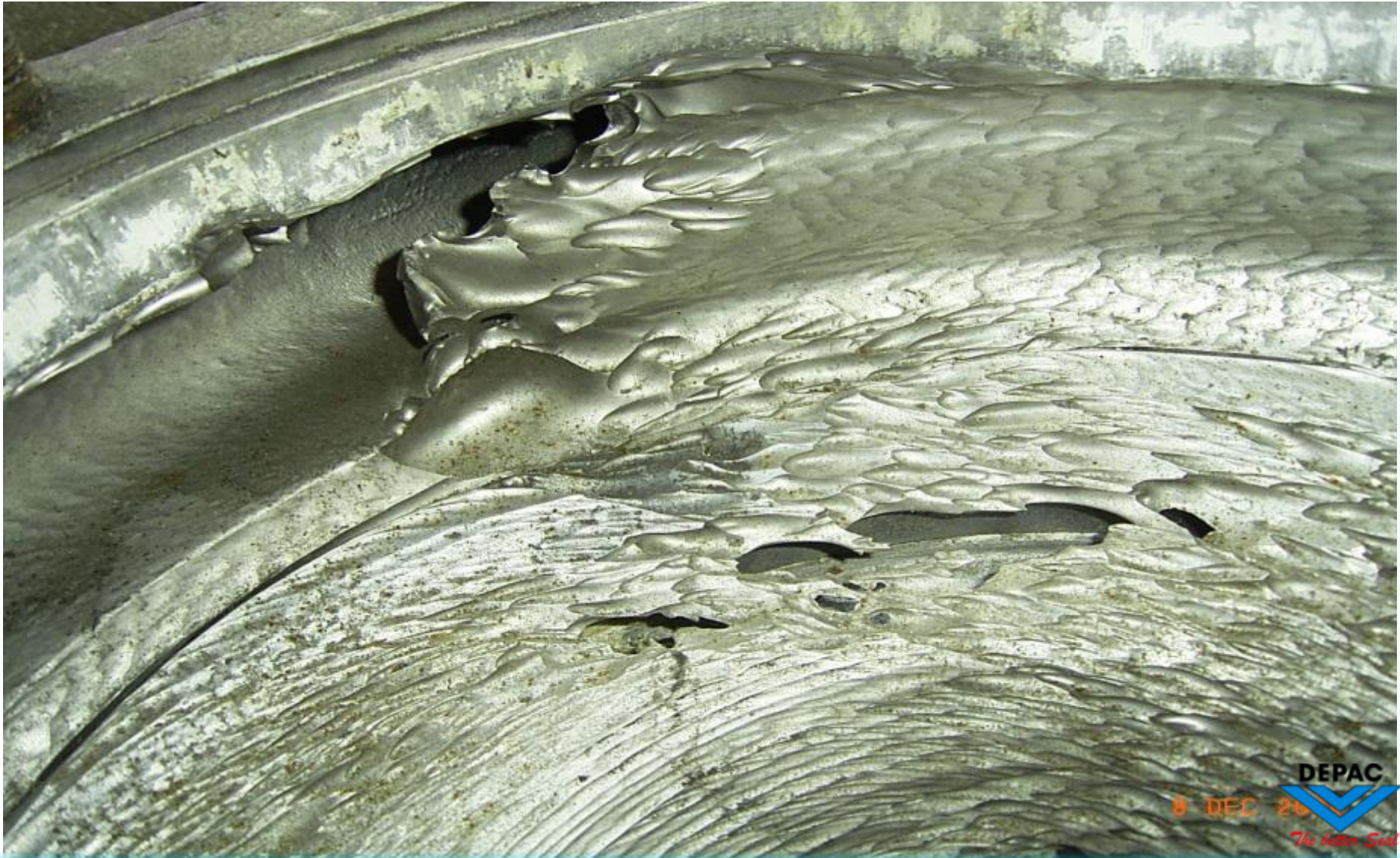
Jet pomp



# REPAIR & UPGRADE



# REPAIR & UPGRADE



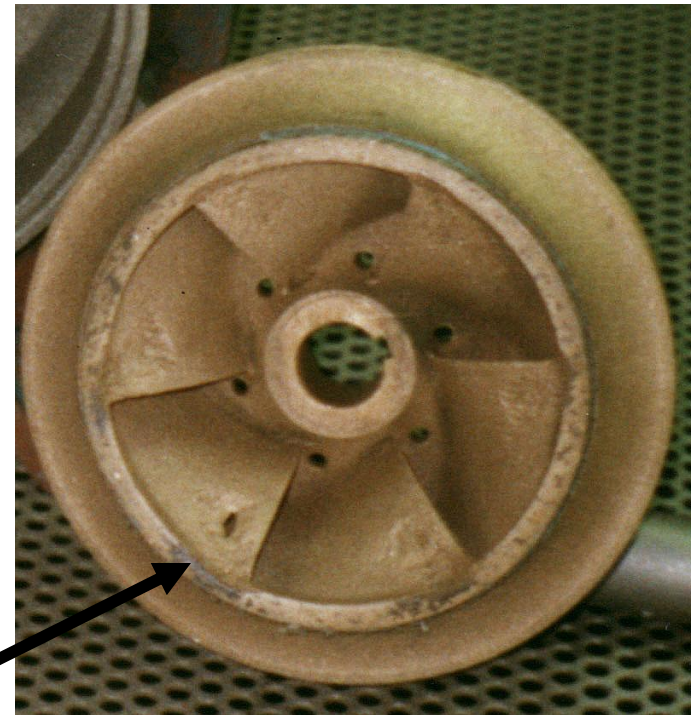


# REPAIR & UPGRADE



## REPAIR & UPGRADE

### Centrifugal Pump – KSB Etanorm



After abrasive blasting damages from erosion and cavitation became visible.

## REPAIR & UPGRADE

### Centrifugal Pump – KSB Etanorm

Upgrade Repair had been  
Made with *COMTEC 424*  
*RECERAM* and *435*  
*RECERAM L*



Pump went back into  
service as  
**„BETTER AS NEW“**

## REPAIR & UPGRADE

Centrifugal Pump – in Rubbish burning heating station



Lime milk pump. Severe wear in on the surface of the volute inside

## REPAIR & UPGRADE

Centrifugal Pump – in Rubbish burning heating station



COMTEC RECERAM 426 and 435 L made a pump upgrade for a fraction of the cost of a new pump.